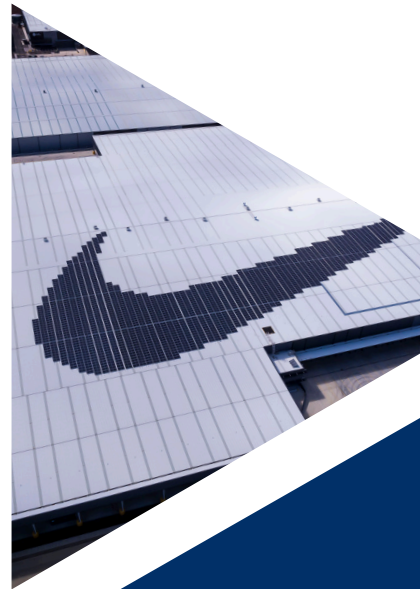
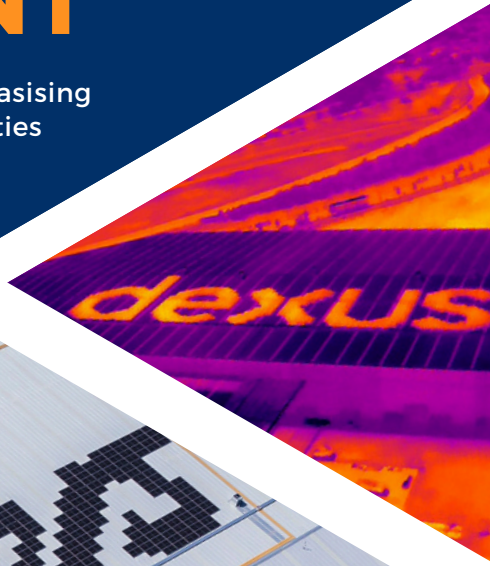




2025

# CAPABILITY STATEMENT

Experts in intricate solar designs, emphasising professionalism and safety as top priorities



## CONTACT

1300 755 057

[admin@energycommercialgroup.com.au](mailto:admin@energycommercialgroup.com.au)



**Energy Commercial Group (ECG)** is more than a provider of solar solutions; we're a committed partner in driving impactful change. Founded in 2018, ECG has quickly become a trusted name in Victoria's commercial renewable energy sector.

ECG pride itself at their reliability, technical expertise, and meticulous project delivery, ensuring every project is completed on time and within budget. Our commitment to open, transparent communication with clients at every stage of a project helps us consistently achieve this.

### **Mission**

We believe that every project is a partnership built on trust, transparency, and mutual success. Our goal is to help our clients and EPC's achieve their renewable energy objectives through tailored, sustainable installations that drive both environmental and financial benefits.

### **Trusted Expertise**

ECG has led in large-scale rooftop solar installations since 2018, delivering high-quality solutions with precision and efficiency.

### **Collaborative Success**

We work closely with EPCs and stakeholders like John Holland & Landlease, building long-term partnerships based on open communication, trust, and shared goals.

### **Focused on Quality & Sustainability**

ECG's proactive project management approach, stringent safety standards, and quality assurance measures ensure that projects are completed on time, within budget, and to the highest standard, driving our clients into sustainable and stable future.



**Our people are at the heart of ECG, driving each project forward with skill and dedication to client goals.**



### **Project Management Team**

Our seasoned Project Managers and Site Supervisors meticulously oversee project timelines, budget compliance, and safety protocols. They maintain open lines of communication with clients to ensure that each milestone meets expectations. Their keen attention to detail guarantees that projects are executed punctually and with complete transparency.



### **Health, Safety, and Environment**

Our HSEQ Manager, and our project managers who conduct thorough site inspections, manage permits, and provide continuous on-site support. Safety is always prioritised, making sure projects are executed with the highest safety standards and compliance.



### **On-Site Installation Team**

Our experienced Installation Team meticulously executes each phase of the project, from site PV module installation and commissioning. Their unwavering commitment to quality and safety guarantees that installations are not only reliable but also adhere to the rigorous standards expected in every ECG project.



### **Engineering Team**

Our Electrical Engineers adopt an agile methodology to deliver technical and innovative solutions for solar and battery storage systems, consistently surpassing regulatory standards and client specifications. They meticulously ensure that each system is optimized for both efficiency and compliance.





## Design & Engineering

We deliver custom system designs that meet all DNSP requirements, prioritising safety, quality, and environmental compliance for seamless integration with client specifications.



## Installation & Construction

From Site Establishment to Commissioning and project handover, ECG's proactive methods ensure efficient, safe, and reliable installations for both rooftop and ground-mount systems.



## Battery Energy Storage Systems (BESS)

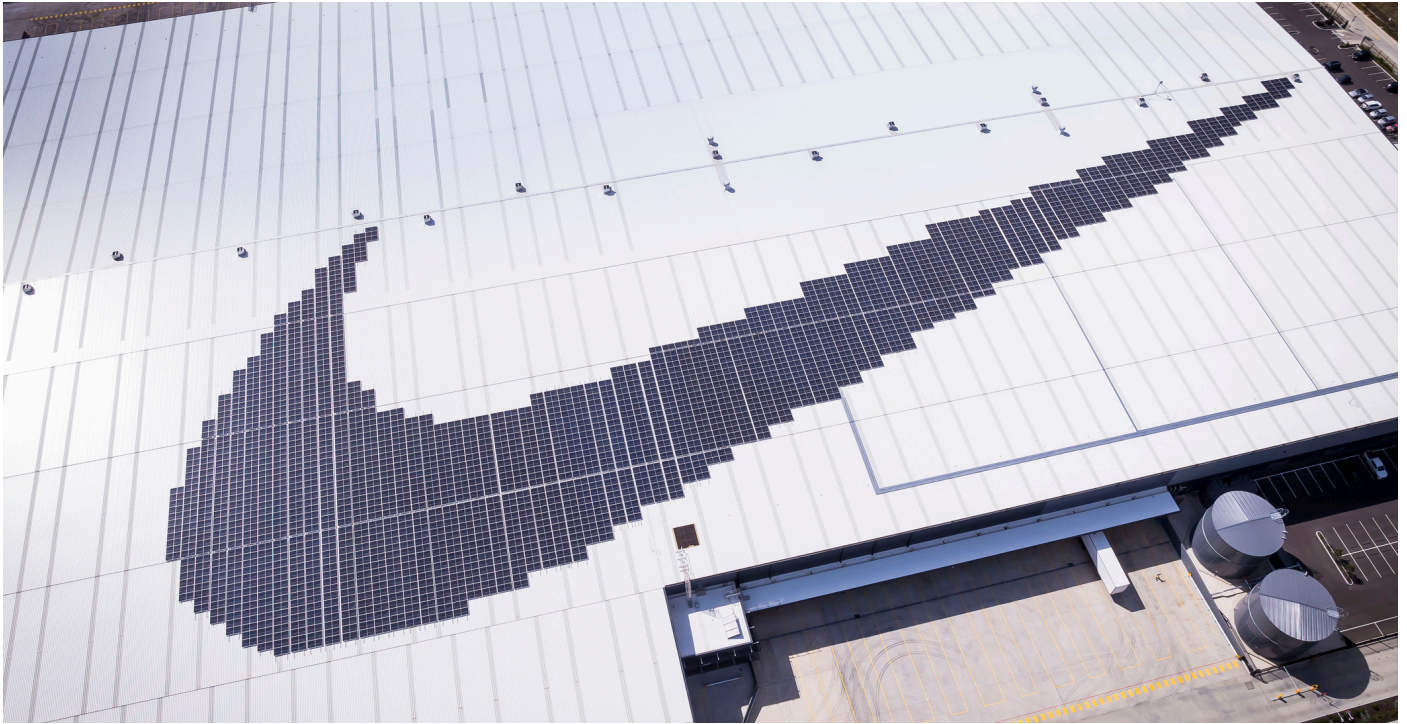
Our battery solutions are tailored to enhance energy reliability and reduce grid dependency, meeting the specific needs of each client.



## Operations & Maintenance (O&M)

We provide comprehensive O&M services, including monitoring, preventative maintenance, thermal imaging, system testing, and end-of-life decommissioning.





## Nike Project 1MW

### Project Summary - CEC Finalist Nominee



This unique solar project involved the design and installation of a 1MW solar power system in the shape of the Nike logo, seamlessly integrated into the construction phase of Nike's new building. The solar array spans the roof in the recognizable swoosh shape, providing sustainable energy while reinforcing Nike's commitment to environmental responsibility.

With an annual energy yield that offsets a significant portion of the building's power needs, the installation not only reduces carbon emissions but also serves as an inspiring visual statement of Nike's brand ethos. This project highlights the potential for creative integration of renewable energy in architecture, blending aesthetics, function, and sustainability in an innovative way.

## Client Testimonial

Working with the ECG team on the Nike project was an absolute pleasure! Their professionalism in handling workers safety while dealing with other critical challenges gave us complete confidence from start to finish. This was no ordinary installation, with tight roof load limitations and a logo design that demanded pinpoint precision, yet ECG, under the expert guidance of Project Manager William Litvin and Stefano, pulled it off seamlessly. They truly delivered a masterclass in handling complex conditions, showcasing their remarkable expertise and dedication to quality at every stage of the project.

**Principal PM - Nike**



## Mondelez Project 1MW



### Project Summary

The Mondelez 1MW solar installation showcases ECG's innovative approach to solving complex engineering challenges in high-stakes environments. Tasked with supporting 8 x 110kW inverters on a non-penetrative refrigeration wall, our team developed a custom inverter wall structure using specialised nuts, threaded rods, and Unistrut, ensuring the setup remained suspended at a safe distance from sensitive freezer panels.

This creative solution maintained the required cooling conditions without compromising structural integrity, effectively balancing energy needs with operational constraints. With an annual energy output that substantially reduces Mondelez's reliance on traditional power sources, this installation serves as a testament to ECG's ingenuity and commitment to advancing sustainable solutions in industrial settings, blending functionality, innovation, and environmental stewardship.

### Client Testimonial

The ECG team, led by Project Manager and Electrical Engineer William, tackled the immense scope and coordination required with local trades to keep every stage on track. Their professionalism, high-quality work, and clear communication with all onsite teams ensured seamless progress and delivered outstanding results within the provided time scope.

Another great project from team **ECG**.

**Principal PM - Mondelez**





## Metro Railway Upgrades



### Project Summary

This ambitious project involved the installation of solar power systems across multiple railway sites for Tier 1 builders, including John Holland and Laing O'Rourke.

Each installation was carefully designed and executed to meet Metro's rigorous clean energy targets, contributing significantly to the railway's sustainability initiatives. Working within tight timelines, ECG coordinated seamlessly with builders, unions, and electrical contractors to navigate the organised complexity of active construction environments. Our team's ability to communicate effectively and adapt quickly ensured that the installations were completed precisely to project specifications, reflecting the importance of detailed planning and collaboration.

This rollout embodies ECG's commitment to quality, precision, and teamwork, demonstrating how our cohesive approach brings sustainable energy to essential infrastructure.

## Client Testimonial

ECG's team displayed outstanding professionalism on the Metro Upgrades project, managing a tight timeline and strict OH&S requirements while working above railway tracks. Their ability to navigate constant site inspections and coordinate with other trades was impressive, delivering the project smoothly and on time despite challenging conditions.

**Principal PM - Metro Rollout**





## Elders 350kW

### Challenges

Detailed project management and site planning for effective team guidance.



## Dexus 450kW

### Challenges

Dual challenges in managing complex project logistics and integrating a BESS system.



## Yuulong Ground Mount 150kW

### Challenges

Remote management, hillside installation, and coordinated efforts with team.

Business Name	Size of Job (kW)	Business Name	Size of Job (kW)
VISY	550	RSPCA	100
Carnegie Memorial Swimming Pool	275	Tigerpak	50
Incolink	109	Carlton Gardens Primary School	50
Mass Timber	400	CMW Toll Healthcare	60
Comfort Sleep	100	Reservoir High School	45
Sensitive Freight	200	Chemist Warehouse	39
Tarneit Central Shopping Centre	500	Storage King	30
Manor Lakes Shopping Centre	455	Kalkallo Shopping Centre	28
Global Express	100	United Energy	25
Knox Private Hospital	36	McDonald's	15 x 30+
Flagstaff Hill Apartments	26.4	Aspire Education	7 x 30+
BAM Wines	300	BASScare	39.6
Caulfield Grammar	417	Josies Transport	30
Creature Tech	250	Very Special Kids Malvern	30
DHL	400	Ripe Maternity Wear	39
Officeworks	200	Amart	100
Lululemon	200	Waverley Private Hospital	134
Computershare HQ	145	Endeavour Group	70
Cotton On	400	Maryborough Education Centre	100
Essity	150	Northern Hospital	50
National Tiles	140	Carlton Gardens Primary School	50
Allied Pinnacle	100	Savour and Grace	30
Border Express	100	Preston High School	120
Silvan	100	Mitre 10	300
JTC	100	BMW South Melbourne	20
FDM	100	Shaw Fabric	50
Alfred Health	91	Silk Logistics	50
Komatsu	80	Munro Footwear	375
Preston Railway Station	60	Noble Park Aquatic Centre Health	60
Surrey Hills Railway Station	70	Glenroy Station	40
Wesley College	55	Amazon	484









## Health, Safety, and Environment (HSE) Documentation

- HSE Management Plan tailored to each project, including risk management, emergency procedures, and defined roles.
- Safe Work Method Statements (SWMS) and Risk Assessments to manage high-risk tasks and equipment.

## Certifications and Licenses

- Necessary high-risk work permits, construction induction cards, and SAA Accreditation for compliant project delivery.
- CEC accredited installer and designer
- Site-specific inductions to ensure all team members are fully qualified and ready to work.

## Compliance & Certification


- **CM3 Prequalification:** Demonstrates our capability in safety management, giving clients confidence in ECG's commitment to workplace safety.
- **Qualified Personnel:** All required certifications, including high-risk work permits and construction induction cards, ensuring compliance.
- **Clear Documentation & Reporting:** Comprehensive documentation for every project phase, including risk assessments, as-builts, and regular performance reporting.



**ECG**  
ENERGY COMMERCIAL GROUP

# LET'S TALK

**John Saliba - Managing Director**

 0423 656 189

 [john@energycommercialgroup.com.au](mailto:john@energycommercialgroup.com.au)

**William Litvin Director/Electrical Engineer (B.Eng. Hons)**

 0466 599 728

 [william@energycommercialgroup.com.au](mailto:william@energycommercialgroup.com.au)

 [www.energycommercialgroup.com.au](http://www.energycommercialgroup.com.au)